



Spindle connection

standard connection for all attachments and accessories

Motor

powerful, durable

Dust extraction*/ Water supply*

integrated

Additional handle

variable adjustment on the collar



Lock-on button

protection against accidental fixing

Metal gearbox

long service life

PUR-construction site cable*

for heavy duty use

- **Mechanical safety clutch***
protection of the user

- **Electronic**
soft start*
overload indication*
temperature control*
over current cut-off*
constant speed*
service indicator*

* not present on all models

CHARACTERISTICS OF DIAMOND CORE DRILLS

With a wide range of different diamond core drills EIBENSTOCK offers tailored solutions for diamond core drilling between diameter 3.5 and 450 mm. The comprehensive machine, drill and accessory program is not only convincing plumbers and electricians but also other craftsman all around the construction.

The **PowerLine**-Series is a specially designed machine concept for series drilling and continuous use in the construction and civil engineering.

» Diamond wet-dry core drill PLD 182.1 NT

The machine for hardest applications in series drilling up to Ø 182 mm in concrete

APPLICATION:

- Dry drilling in sand-lime brick, brickwork, clinker, brick and other abrasive materials as well as wet drilling in reinforced concrete, natural stone and asphalt
- Drilling operators, civil engineering, sanitary, heating and ventilation construction, other installation companies, gardening and landscaping

FEATURES:

- Powerful 2300 W motor with high power reserves and a long lifetime, able for continuous work under pressure
- Electronic – soft start, over current cut-off, overload indication
- 3-speed oil bath gearbox – for optimal lubrication in all working positions due to the specially developed oil pump and optimal adjusted torque-speed-ratio for all diameters
- Mechanical safety clutch
- Combination spindle with integrated connection for centering rod – fast, precise spot drilling
- Ergonomic handle with large-dimensioned switch button – good control and effortless working
- PUR-construction site cable – strong for heavy duty use
- Integrated levels on machine



Optimized efficiency with special gearbox adjustment for powerful drilling progress
Robust full-aluminium-housing



SPECIFICATIONS	PLD PLD 182.1 NT	
Power input	2300 W	
Rated voltage	230 V ~	
No-load speed	0-1000/0-2200/0-4400 rpm	
Drilling diameter	Concrete (wet)	
	1. Gear	82-182 mm
	2. Gear	42-82 mm
	3. Gear	12-42 mm
	Brickwork (dry)	
	1. Gear	122-202 mm
2. Gear	62-122 mm	
3. Gear	12-62 mm	
Spindle connection	G½" female + 1¼" male	
Collar diameter	60 mm	
Weight	7,5 kg	
Order no.	0343X000	

Supplied PLD 182.1 NT in a case, connection for dust extraction and water supply 1¼" f-1¼" m, jaw wrench SW 32/41



Shortest design in its power range – ideal for narrow spaces



Diamond wet-dry core drill PLD 182.1 NT – ACCESSORIES

PowerLine

FOR WET DRILLING

Material



for reinforced concrete

Diamond wet drill bits R½"



- H** 300 mm, Ø 12-31 mm
- I** 420 mm, Ø 38-51 mm



for reinforced concrete

Diamond wet drill bits 1¼"



- J** 450 mm, Ø 41-181 mm

(from Ø 80 mm drill rig required)



FOR DRY DRILLING WITH DUST EXTRACTION

Material



for brickwork,
sand-lime brick

Centering rod

- 200 mm **36395000**
- 450 mm **36391000**

Diamond dry drill bits 1¼"



- D** 200 mm, Ø 82-202 mm
- E** 420 mm, Ø 52-202 mm

Hazardous dust (e. g. silica dust)
has to be suctioned by a Dust
Class M Vacuum Cleaner!
For our electric power tools
we are recommending to
use a Vacuum Cleaner of our
Eibenstock DSS range!

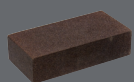


Water tank
10 l metal, incl. 3.5 m hose
with Gardena-Connector

35812000

D E H I J

Diamond drill bits see page 53



Sharpening block
200 x 100 x 50 mm

35910000



Sharpening plate
320 x 320 x 55 mm

35913000



Copper ring 1¼"
for easy removal of the drill bit

35450000 1 piece



Slider quick release ring 1¼"
for drill bits

35652000 1 piece



Drill rig
BST 182 V/S (see page 44)

09646000

Connecting adapter
universal tool holder/
collar Ø 60 mm

35829000

Diamond core drilling unit
PLE 182 (see page 48)

03435000

